

# ETY/ETU SERIES ELECTRIC LIFT TABLE OPERATING INSTRUCTION



# **Contents**

**I.Summary**

**II.Label**

**III.Product usage and performance feature**

**IV.model named way of lift table**

**V.Product parameter**

**VI.Install and adjustment**

**VII.Operating and using**

**VIII.maintenance**

**IX.Attention item**

**X.Common troubleshooting**

**XI.Hydraulic theory chart**

**XII.Electro circuit theory chart**

**XIII.Axonometrical chart**

**XIV.Parts detail list**

**XV.Packing list**

**XVI.Product Warranty**

# I. Summary

Yuyao City Jinsheng Machinery Limited company is long-term commitment to electric lift table products R & D, production, business management. Our company has already passed ISO9001 quality system and product CE certification, the company has strong technical force and first-class product testing equipment, is a professional manufacturer of lift table.

# II.

1000kg 2200lb

A. DO NOT ENTER UNDER THIS PLATFORM UNLESS IT IS MECHANICALLY LOCKED

B. DO NOT PUT HANDS OR FEET UNDER THE PLATFORM

C. NOT STAND ON THE PLATFORM



Name : Electric Lift Table Model : \_\_\_\_\_

Max Capacity: \_\_\_\_\_ kg

Min. Height : \_\_\_\_\_ mm

Max. Height : \_\_\_\_\_ mm

Serial No. : \_\_\_\_\_

YUYAO JINSHENG MACHINERY CO., LTD ISO9001/CE

Volt: \_\_\_\_\_ V Motor Power : \_\_\_\_\_ kw

Hertz: \_\_\_\_\_ Hz Control Volt: DC24 V

Tel: 0574-62632310 Fax: 0574-62632287

Add: No. 103 Ziling Road Yuyao City, Zhejiang Province, China

  **WARNING**

Please read the required and operate way of manual carefully before using this lift table. If you brake of regulation, please bear the damage by yourselves.

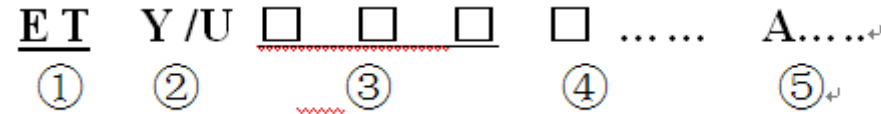
Remark: The warranty period 3000 hours one year

### III. Product usage and performance feature

ET series of electric hydraulic lifting table, is a fixed type, it can use the manual handling car tools, product from the high position to the ground or the ground plane of the product is lifted to a certain height. Is the production line, assembly line ideal equipment . It is important to improve the production efficiency, reduce the labor intensity of workers, to ensure the production of safe work plays an effective role.

The machine uses high quality high strength steel production, under the working platform is installed with aluminum alloy safety frame , has effective anti pinch function, has an electrical limit switch device and cylinder mechanical limiting device, the design scheme of double insurance to guarantee the safety of lifting.at the same time hydraulic cylinder design has explosion-proof valve preventing blowout to cause work station rapid decline .

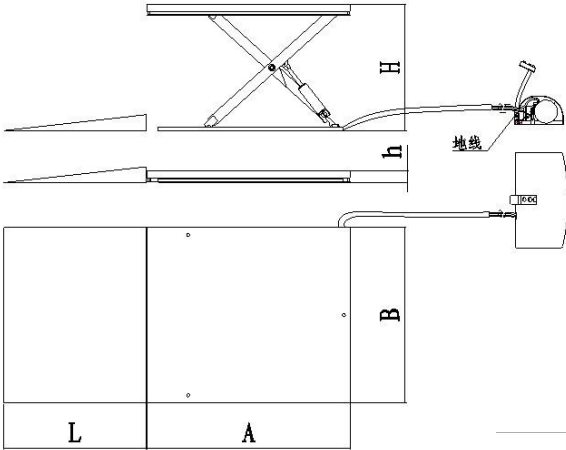
### IV. The named way of fixed lift table model



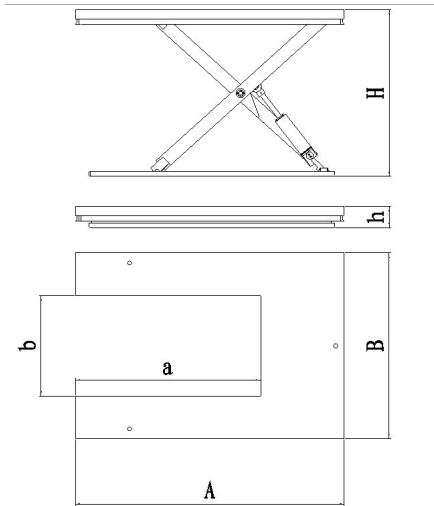
- ① Fixed electric
- ② Lift table type
- ③ Capacity
- ④ Number
- ⑤ Special

### V. Product parameter

ETY



ETU



Model	ETY1001/10 02....	ETY1501/15 02....	ETY2001/2002 ....	ETU1000/1001 ....	ETU1500/1501 ....
Load Capacity(kg)	1000	1500	2000	1000	1500
Lowest Height h(mm)	85	105	105	85	105
Max. Height H(mm)	860	870	870	860	860
Table Dimension AxB (mm)	1450×1140 1600×1140	1600×800 1600×1000	1600×1000 1600×1200	1420×1140 1420×1340	1600×1160 1600×1360
“U” Open Dimensions (amm×bmm)				1030×560 1030×760	1030×560 1030×760
Work Voltage	110V/600Hz	110V/600Hz	110V/600Hz	110V/600Hz	110V/600Hz
Motor Power(kw)	1.1	1.5	2.2	1.1	1.5
Control Current	DC24	DC24	DC24	DC24	DC24

## VI. Install and adjustment

1.This product has the basic assembly before shipping. Prohibite to use if it has damage at the shipment, and it should immediately contact the dealer. In the inspection situation, installed handle,then use.

- ① Check whether electrical parts have loose or broken situations.
- ②Check oil pipe in the hydraulic system whether it is connected closely, and check the oil whether meets the specified requirements.

2.Testing life table

- ①press the control switch lifting button, to observe electric lift table whether steady rise .
- ② press down button, observation electric lift table lowering situation.

## VII. Usage

- ①Lift table for movement, must be placed in the lowest position.
- ②Lift table must ensure the safety situation to carry object on higher positions .
- ③The heavy object can not be placed on the lift table in long time.
- ④Do not use lift table on the slopes .
- ⑤Do not use lift table on rainy day at the outdoor

## VIII. Maintenance

- a) Periodic preventive maintenance can reduce the wear of products, so that products can normally operate for a long time.
- b) lifting product to the highest point, check the hydraulic oil is sufficient, if not, add YA-N46 oil or similar hydraulic oil.
- c)Product input voltage must be connected with the lock control cabinet.
- d)Hydraulic oil

1)Add the hydraulic oil

If the fork can not rise to the highest position, you should add the hydraulic oil to recovery the liquid height to lubrication hole less than 2cm, and when adding the hydraulic oil ,the fork must be located in the lowest position;

2)Replace hydraulic oil

The hydraulic oil in hydraulic system to drain, then according to the item 1 ) method to add the hydraulic oil;

3) According following record to select different type of hydraulic oil

Temperature	Hydraulic oil
-5 degree ~ +45 degree	L-HM68 hydraulic (same as ISOVG68)
-15 degree ~ +5 degree	L-HM46 hydraulic (same as ISOVG46)

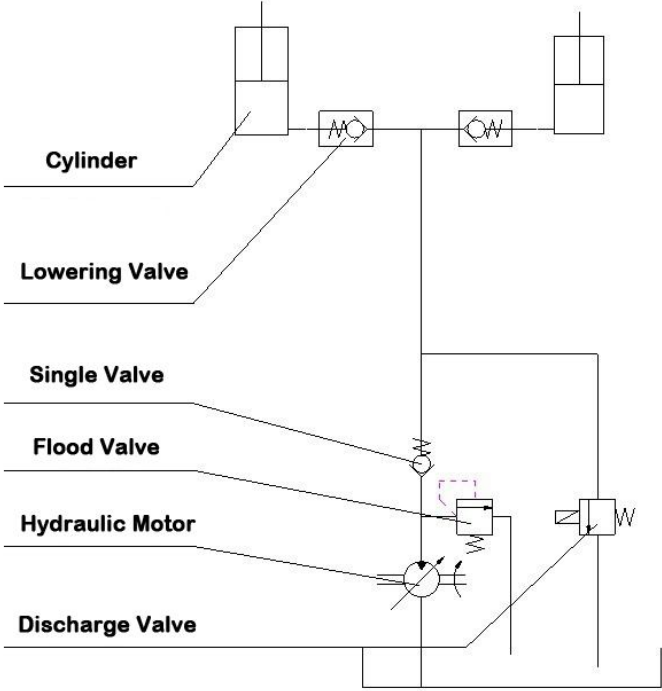
## IX. Attention item

- Assembly and operation must be carefully read and understand the operating instructions.
- Lift table cannot overload, load should be controlled at rated load.
- Lift table in carrying situation, can not put hand or foot below table.
- When the table is lowering, cannot put feet on the wheel brake pedal.
- Load cannot focus placed on the one place of table, and must be placed on the table not less than 80% of the surface area.
- When the work table is provided with heavy objects, and at the high position, it can not carry the lift table.
- In order to security, do not use lift table on slope.
- Do not allow to install instability or loose packing's load.
- It should be checked every day before operation, discover machine faults and electrical damage should be repaired in time.

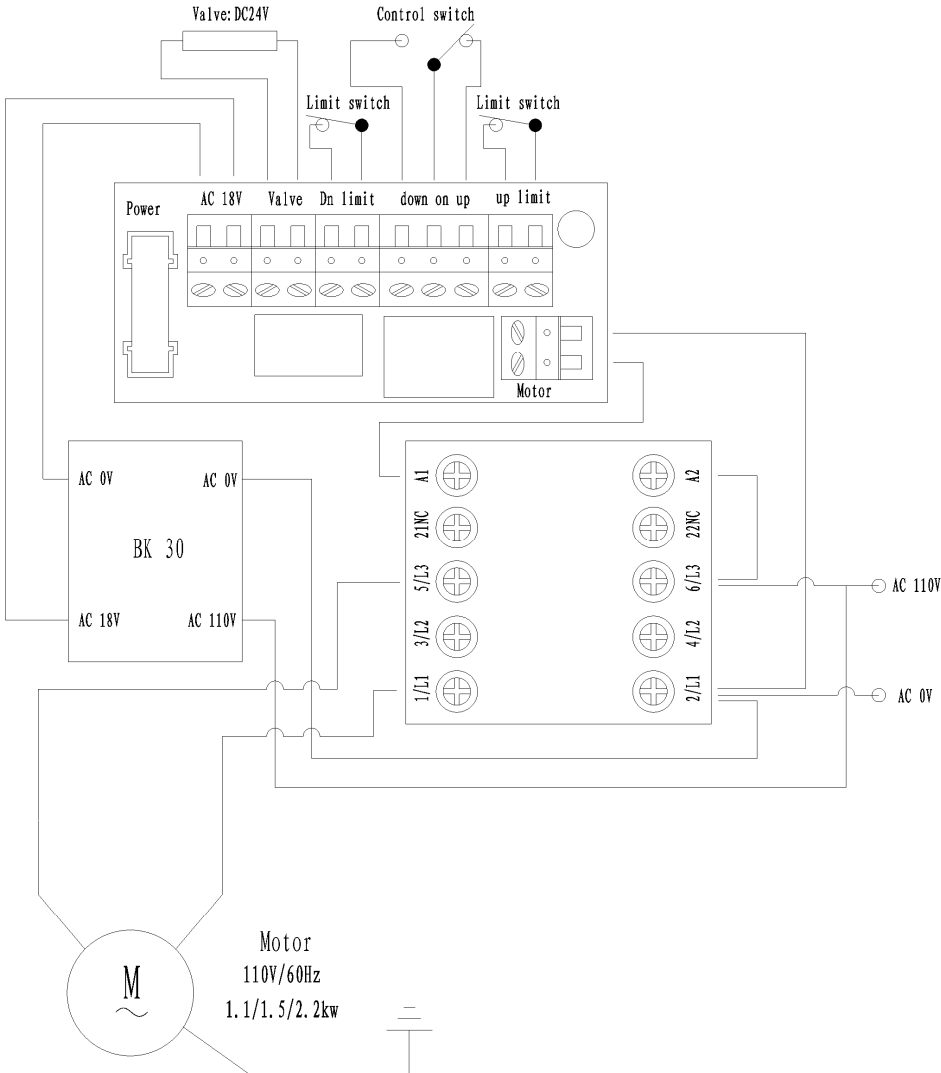
## X. Common troubleshooting

Number	Specialist	Reason	Action
1	Table cannot lift	<ol style="list-style-type: none"> <li>Switch failure</li> <li>Oil is not enough</li> <li>Seal parts wear</li> </ol>	Check and repair switch Add oil Replace seal parts
2	Lift table can not lower	<ol style="list-style-type: none"> <li>Switch failure</li> <li>Oil blocking</li> </ol>	Check and repair switch Check and repair oil circuit
3	Motor not work	<ol style="list-style-type: none"> <li>Motor burnout</li> <li>Terminal and plug loose</li> </ol>	Check and repair motor Check Terminal and plug

# XI. Hydraulic theory chart

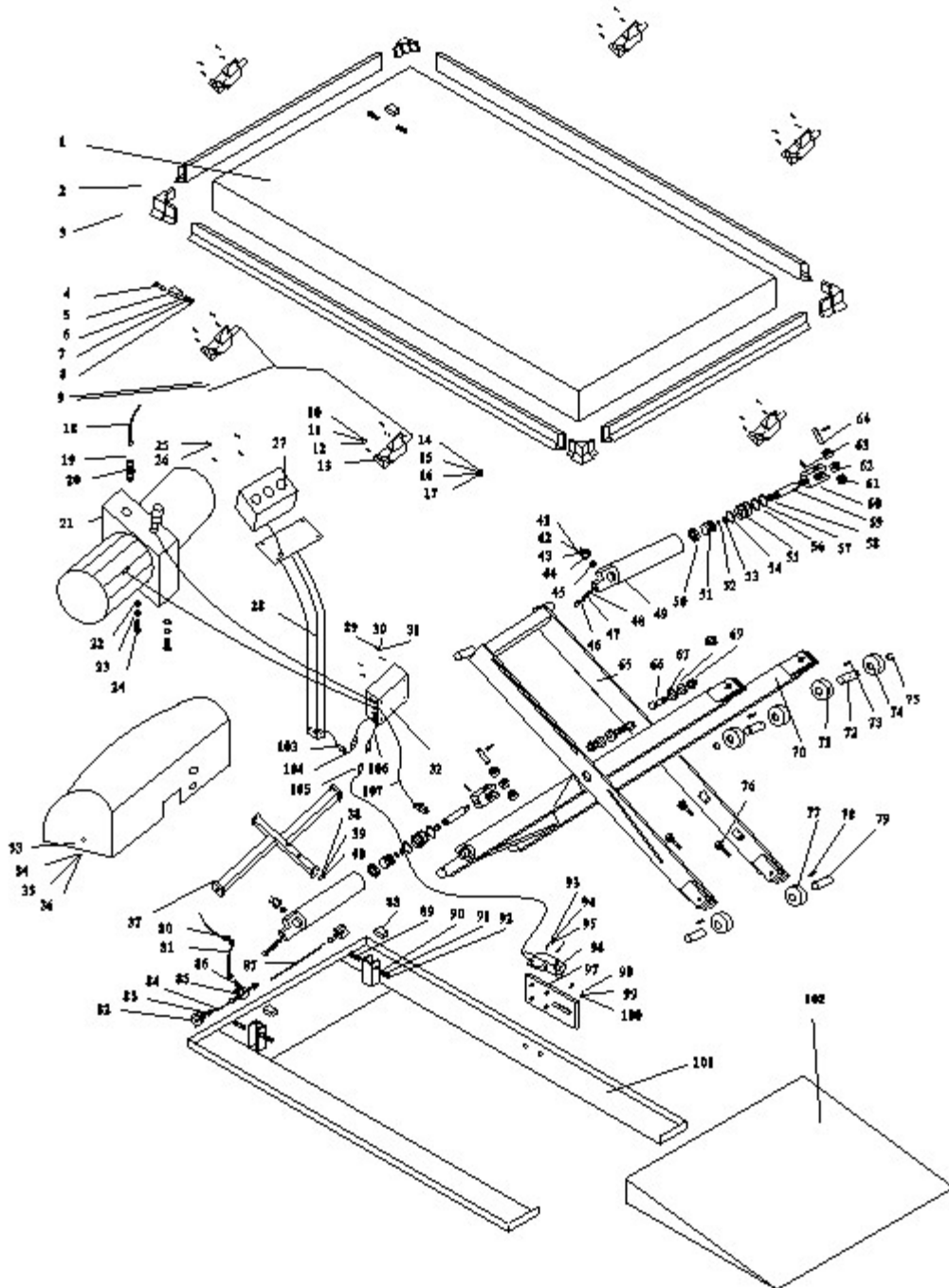


# XII. Electro circuit theory chart



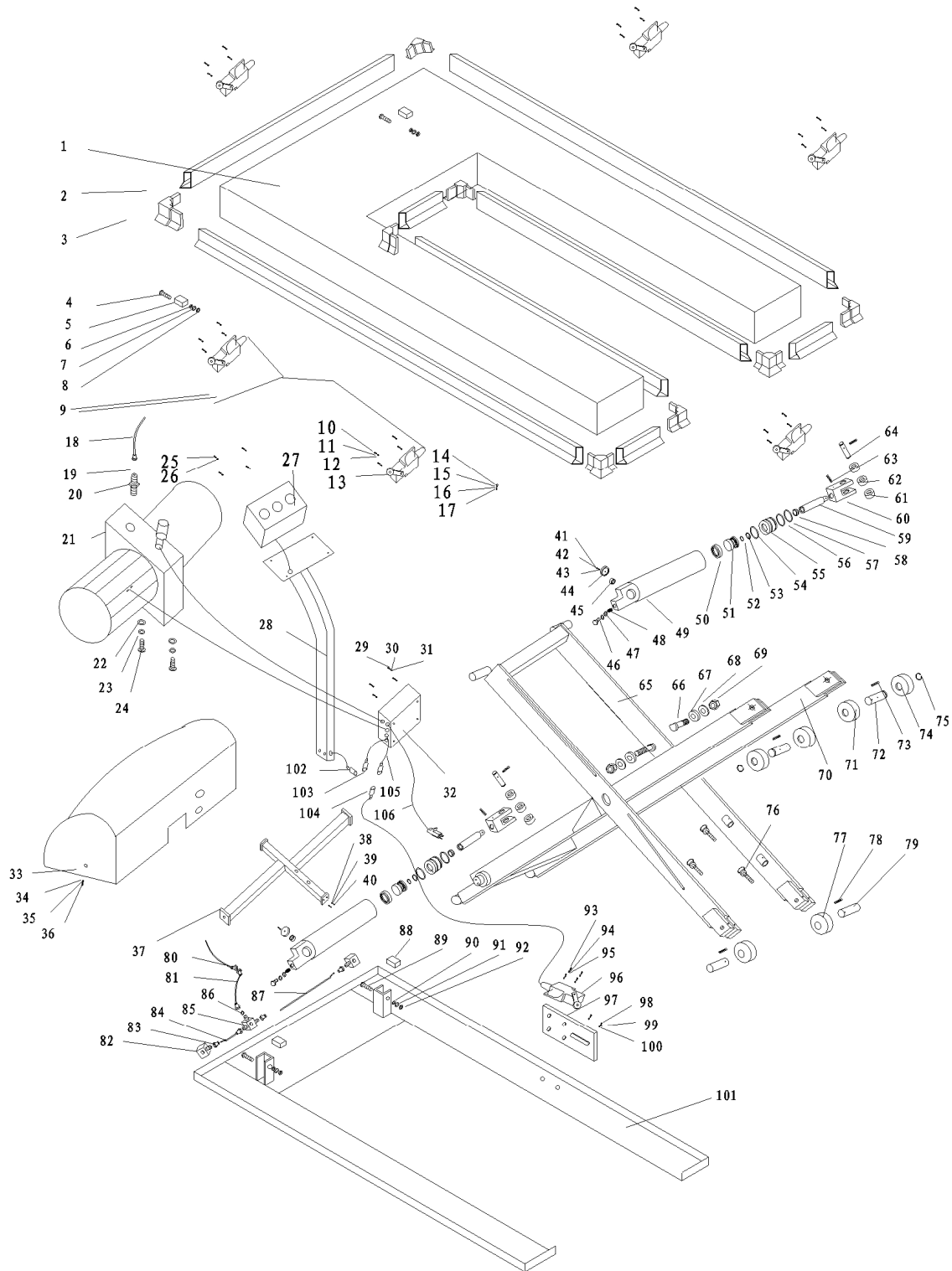
### XIII. Axonometrical chart

ETY1000/1500/2000 Low Profile Electric Lift Table





# ETU1000/1500 "U" Type Electric Lift Table



## XIV. Parts detail list

No.	Description	Q'ty	No.	Description	Q'ty	No.	Description	Q'ty
1	Table	1	35	Spring washer	3	69	Set screw	2
2	Safety cover	4	36	Semicircle screw	3	70	Link assembly	2
3	Corner	4	37	Motor holder	1	71	Rolling wheel	2
4	Hex cap bolt	2	38	Flat washer	2	72	Bearing	2
5	Nylon washer	2	39	Spring washer	2	73	Spring pin	4
6	Flat washer	2	40	Hex cap bolt	2	74	Rolling wheel	2
7	Spring washer	2	41	Hex cap bolt	4	75	Lock pin	2
8	Nut	2	42	Spring washer	4	76	Screw	3
9	Wire	1	43	Flat washer	4	77	Rolling wheel	2
10	Semicircle bolt	24	44	Big washer	2	78	Spring pin	2
11	Flat washer	24	45	Bearing	2	79	Bearing	2
12	Spring washer	24	46	Oil pipe tie-in	2	80	Fast cylinder tie-in	1
13	Switch (1)	6	47	Washer assembly	4	81	Short oil pipe	1
14	Big washer	6	48	Safety valve	2	82	Oil pipe tie-in	2
15	Flat washer	6	49	Cylinder	2	83	Pipe tie-in	4
16	Spring washer	6	50	Oil seal	2	84	Steel oil pipe	1
17	Hex cap bolt	6	51	Lift Piston	2	85	Oil tie-in	1
18	Long oil pipe	1	52	Steel C-ring	2	86	O-ring	1
19	O-ring	1	53	O-ring	2	87	Long steel oil pipe	1
20	Pipe tie-in	1	54	O-ring	2	88	Nylon washer	2
21	Motor	1	55	Top nut	2	89	Hex cap bolt	2
22	Flat washer	2	56	Steel ring	2	90	Flat washer	2
23	Spring washer	2	57	Lock ring	2	91	Spring washer	2
24	Hex cap bolt	2	58	Dust cover	2	92	Hex cap nut	2
25	Semicircle bolt	2	59	Lift piston rod	2	93	Semicircle screw	4
26	Spring washer	2	60	Up holder	2	94	Spring washer	4
27	Switch (2)	1	61	Side wheel	4	95	Flat washer	4
28	Switch holder	1	62	Middle wheel	2	96	Switch	1
29	Semicircle bolt	2	63	Spring pin	1	97	Inner install board	1
30	Flat washer	2	64	Up pin	2	98	Hex cap bolt	2
31	Spring washer	2	65	Link assembly	2	99	Spring washer	2
32	Wire	1	66	Side connect pin	2	100	Flat washer	2
33	Electrical cover	1	67	Big flat washer	2	101	Frame seat	1
34	Flat washer	3	68	Nylon washer	2	102	Tilt Board	1

## XV. Packing list

Number	Description	Model	Unit	Quantity
1	Ultra-low motor lift table		table	1
2	Fly ring		pieces	3
3	Manual	English	copy	1
4	Hydraulic control box		set	1

## XVI. Product Warranty

### Warranty card

The machine name: \_\_\_\_\_

Product model: \_\_\_\_\_

Manufacturing date: \_\_\_\_\_

Purchase date: \_\_\_\_\_

Guarantee date: \_\_\_\_\_ to \_\_\_\_\_

Quality of this machine warranty for six months : must use normal range: motor, oil pump, oil pressure, oil cylinder and so on ; battery warranty use for six months.

Artificial or natural disaster damage is not in the warranty:

1 disassemble the machine damage by personal.

2Not according to the performance of the machine to normal operation caused damage

3.The earthquake, fire and other natural disasters cause damage